



# Tablet 7" Rugged

# **PLUS 7000**

## Rugged and Professional



# PLUS 7000

## Rugged and Professional

The Plus 7000 is 7 inch professional rugged tablet running with Windows 10 IoT Enterprise platform. It is born to establish a new form factor between handy smartphone and tablet PC. More and more, professionals require larger display terminals while keeping compact and light weight design. Maximizing portability, 7 inch is perfect size for professionals to view PDF document and enter data conveniently in the field. The Plus 7000 is as light as 600 grams and 19mm thin, smoothly slipped into pocket of professionals' uniform.



# 1.

## Truly Handy and Pocketable

The Plus 7000 has 19mm thickness competitively slimmer than average rugged tablet PC. With light weight of 600 grams, it provides utmost portability and can be slipped smoothly into the pocket of professionals' uniform.



# 7"

7 inch display is perfect for professionals to view PDF document and enter data conveniently in the field.



## 2.

### Born to Survive in Extreme Environment

Anti-shock resistant: **1.2meter drop certified**

IP 65 **sealing**

Operating Temperature of **-20 ° C ~ +60 ° C**



Anti Shock Resistant



4 edge rubber  
bumper



Reliable hardware  
keys



## 3.

### Plus 7000 always changes

PLUS 7000 is:

Your indoor PC

Your outdoor Tablet

Your vehicular Mobile Computer



Professional Vehicle Cradle  
with wide extension capabilities

Ethernet, HDMI, Serial, 4 USB Port  
Flexibility of Customization



## 1.

**Excellent Outdoor Readability,  
even in direct and sharp sunlight**

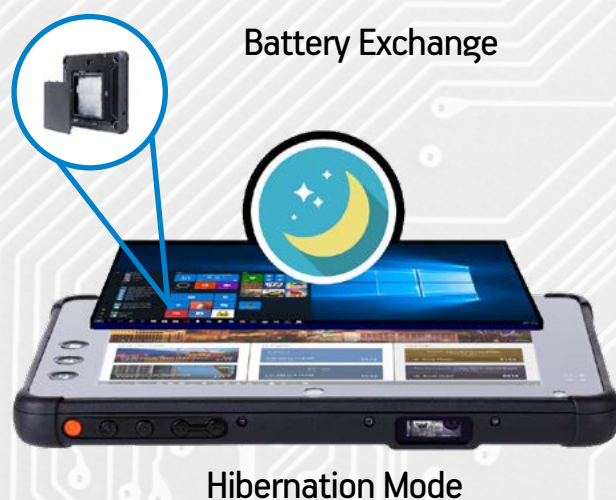
**700 nits**



## 2.

**User Removable Battery  
without reboot**

User removable battery is great benefit of the Plus 7000. Thanks to that, professionals can conduct extra-long hour task out in the field. The battery is conveniently exchangeable without reboot



Windows 10



## 3.

### Windows 10 IoT Enterprise

Intel CherryTrail 1,9GHz Quad-Core Processor  
4GB RAM, 64 GB (128GB optional) ROM

#### Security:

Sensitive information is secure with Windows 10 IoT Enterprise. Devices can be locked down to prevent users from accessing system settings and tampering with user interfaces.

#### Licensing & Activation:

Windows 10 IoT Enterprise is simple to activate and easy to maintain.

#### Customization:

As the successor to Windows Embedded Standard, Windows IoT Enterprise offers the same functionality found in Windows 10 while excluding unwanted user-facing features. This allows digital signage vendors to provide a predictable and consistent end-user experience across multiple device platforms.

Windows 10 Enterprise has core features most adaptable to business usage among all Windows OS.

## 4.

### Built-in Professional 2D Imager and NFC Reader

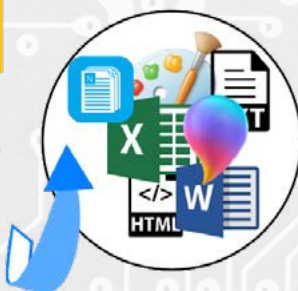
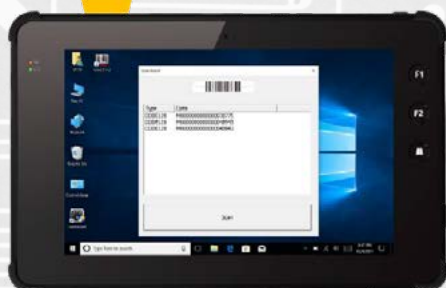
Scanner (Honeywell) and NFC Reader



## 5.

### Professional Scan Emulator

- Auto Start: Starts automatically as soon as tablet OS starts
- Auto Scan: Scan mode which enables you to scan without pressing function button
- All Types of Barcode (1 D/2D)
  - scanner barcode editing



## 6.

### Efficient & Convenient Setting Dashboard

intuitive and easy setting tool with less depth through Windows



## 1. Field service

PLUS 7000 can be used comfortably in any situation, because it is small and light.



## 2. Retail

- multiplex shopping malls
- drug stores
- staff enablement; Inventory management; Price Strategy; Personal Shopping.



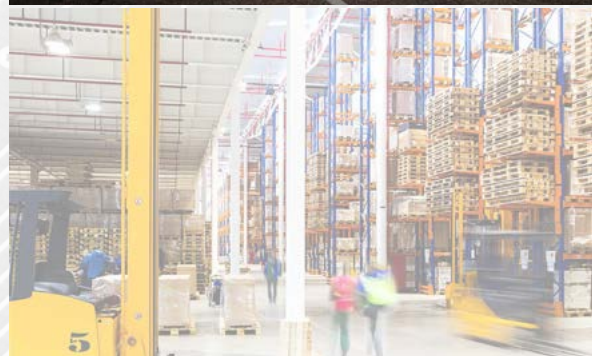
## 3. Transportation and Logistics

- Courier Express Parcel
- Retail Distribution
- Mail Courier Service
- Mass Transport



## 4. Warehouse Management Solution

- Receiving
- put-away e Replenishment
- Inventory
- picking



## 5. Sales Force Automation

- Work order management
- Data Entry Automation
- Staff Communication
- Workforce Connect



## 6. Law Enforcement

- Traffic Law Enforcement
- Parking Law Enforcement
- Patrol Mobile Solution



## 1. Standard Accessories

AC line cord & Power supply  
Stylus pen, Pen string  
Hand Strap



## 2. Battery

Li-ion Polymer Battery  
Standard 3.7V 5600mAH  
Extended 3.7V 11200mAH



## 3. Professional Desktop Cradle

Device charging slot, Additional battery charging slot, USB Host 2.0, A type  
HDMI 2.0 Full size A type, Serial RS232C  
Ethernet port  
Lock to place tablet with stability  
Key to keep tablet safe.



## 4. Professional Car Cradle

Device charging slot  
Cigar plug input power, Direct Input power,  
USB Host 2.0, A type  
HDMI 2.0 Full size type A  
Serial RS232C  
Ethernet port  
Lock to place tablet with stability  
Key to keep tablet safe.  
Two wheels to adjust angles of Display



## Performance Characteristics

<b>CPU</b>	INTEL Cherry Trail Quad Core X5-Z8350 Processor (1.44GHz up to 1.9GHz / 2MB Cache / 64bit / SDP 2W)
<b>OS</b>	Windows® 10 IoT Enterprise
<b>Memory</b>	4 GB DDR3L-1600MHz 64GB EMMC (128GB optional) USB Host 3.0, A type, super speed (5Gbit/s)
<b>Communication Interface</b>	Desktop Cradle Interface : USB 2.0 A type Host 3ea, HDMI 2.0 1ea, Serial 1ea, Ethernet 1ea Extension 10pin connector : supporting USB and Serial interface

## Battery(5600mA) Performance

<b>Standby Time</b>	100 hours / 5,600mAh standard battery
<b>Video Streaming Time</b>	5 hours / 5,600mAh standard battery 8 hours / 5,600mAh standard battery (keep turning on the LCD module and the communication module)
<b>Charging time</b>	5hours / 5,600mAh standard battery

## Ambiente utente

<b>Sealing</b>	IP65
<b>Drop Spec.</b>	1.2M drop to concrete. 2 drops per 6 sides
<b>Operating Temperature</b>	-20 °C ~ +60 °C
<b>Storage Temperature</b>	-30 °C ~ +70 °C
<b>AC Power</b>	Input : AC 100 ~ 240V, 50 ~ 60Hz Output : DC +5.0V, 5A
<b>Relative Humidity</b>	Non-condensing, 93%

## Interactive Sensor Technology

Motion-sensor: 3-axis accelerometer that enables motion-sensing applications for dynamic screen orientation  
E-compass : To tilt compensated electronic compass utilizing an accelerometer and a magnetometer.  
Ambient light sensor : To adjust the screen brightness automatically based on the available light.

## Physical Characteristics

<b>Dimensions</b>	131mm H X 203mm W X 19mm D
<b>Weight</b>	600 gram with 5,600mAH standard battery
<b>Display</b>	7 Inch / WXGA (800x1280), 700 nits (cd/m2)
<b>Input</b>	3 Front keys, 5 Side keys (Including 2 programmable keys)
<b>Battery</b>	Standard : 5,600mA/h, 3.7V, Li-polymer Extended : 11,200mA/h, 3.7V, Li-polymer
<b>Expansion Slot</b>	MicroSDXC / Up to 2 TB cards supported
<b>Audio</b>	Dual Speaker / Receiver / MIC  4G LTE / HSPA+ / GSM / GPRS
<b>Wireless (WWAN)</b>	EU Frequency band 4G LTE : 800, 900, 1800, 2100, 2600MHz 3G HSPA+ : 900, 1800, 2100MHz 2G GSM/GPRS : 900, 1800MHz
<b>Bluetooth</b>	Bluetooth 4.0 + HS (supporto per cuffie BT)
<b>Wireless LAN</b>	802.11 a/b/g/n/ac
<b>GPS</b>	Embedded A-GPS
<b>Notification</b>	Charging status LED, Power on/off LED
<b>Scanner</b>	2D Imager (Honeywell N3680)

## Camera

<b>Resolution</b>	8.0 megapixel with Auto Focus (Rear Camera) 2.0 megapixel with Fixed Focus (Front Camera)
<b>Illumination</b>	User controllable flash
<b>Lens</b>	Auto Focus (Rear Camera)

## Regulatory

<b>Environmental</b>	RoHS-compliant
<b>Electrical Safety</b>	IEC 60950-1: 2005 (2nd Edition) and/or EN 60950-1:2006
<b>WLAN &amp; Bluetooth</b>	ETSI EN300328:V1.7.1(2006-10)
<b>EDGE/GSM 900/DCS 1800</b>	3GPP TS 34.123 GCF approved module ETSI EN301 511:V.9.0.2(2003-03) ETSI TS 151 010-1 :V7.9.0(2008-04)
<b>HSDPA</b>	ETSI EN 301 908-1G2:V.3.2.1(2007-5) 3GPP TS 25.102 V8.0.0 (2008-05)
<b>RF Exposure</b>	EN 60950-1: 2006+A11:2009 , EN50360: 2001, EN62209-1: 2006 and IEEE1528-2003
<b>EMI/RFI</b>	ETSI EN 301 489-1 V1.8.1(04/2008) ETSI EN 301 489-7 V1.3.1(11/2005) ETSI EN 301 489- V1.3.1(04/2008) ETSI EN 301 489-24 V1.4.1(09/2007)
<b>Laser Safety</b>	IEC 60825-1:1993+A1:1997+A2:2001, EN 60825-1:1994+A2:2001+A1:2002 "Safety of Laser products"

## Standard Reading Range

SYMBOLGY	*TYPICAL RANGE
<b>100% UPC</b>	55 mm to 280 mm (2.1 in to 11.0 in)
<b>5MIL CODE 39</b>	61 mm to 130 mm (2.4 in to 5.1 in)
<b>20MIL CODE 39</b>	60 mm to 380 mm (2.4 in to 15.0 in)
<b>6.7MIL PDF417</b>	60 mm to 125 mm (2.4 in to 4.9 in)
<b>10MIL DATA MATRIX</b>	60 mm to 130 mm (2.4 in to 5.1 in)
<b>20MIL QR</b>	50 mm to 230 mm (2.0 in to 9.0 in)

\* Typical performance may be impacted by barcode quality and environmental conditions

## Scanner 2D Image (Honeywell N3680, H/W Decoder)

<b>Sensor</b>	CMOS sensor with 640 x 480 pixel resolution
<b>Illumination and Aiming</b>	White LED illumination; red LED dot aimer
<b>Frame rate</b>	30 frames per second
<b>Motion Tolerance</b>	Up to 10cm/s for 13mil UPC at optimal focus
<b>Field of view</b>	Horizontal 37.8°, Vertical 28.8°
<b>Scan Angles</b>	Tilt: 360°, Pitch ±45°, Skew: ±45°
<b>Symbol Contrast</b>	Rapporto di contrasto di stampa minimo del 35%

## Peripherals and Accessories

<b>Desktop cradle (1slot)</b>	Device charging slot / 1ea Additional battery charging slot / 1ea Ethernet port / 1ea HDMI 2.0 Full size type A / 1ea (High definition Multimedia Interface) USB Host 2.0 / 3ea Serial RS232C / 1ea
<b>Car Cradle</b>	Device charging slot / 1ea Ethernet port / 1ea HDMI 2.0 Full size type A / 1ea (High definition Multimedia Interface) USB Host 2.0 / 2ea Serial RS232C / 1ea Power input (DC-IN) / 1ea
<b>Electrical Safety:</b>	IEC 60950-1: 2005 (2nd Edition) and/or EN 60950-1:2006
<b>EMI/RFI:</b>	EN 55022:2006 Class B EN 61000-3-2:2006 EN 61000-3-3:1995 +A1:2001+A2:2005